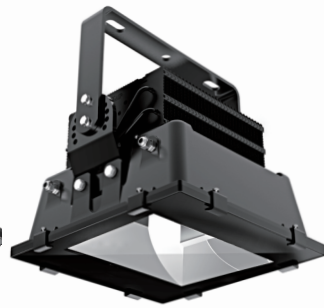


LED Stadium Lights 400W to 1000W

LED STADIUM LIGHTS 400W TO 1000W



400W



500W



1000W

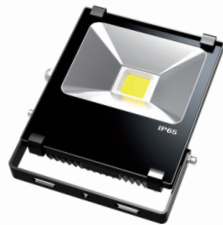


- ⚡ IP Rating: IP66
- ⚡ Input Voltage: 85~295VAC, 50/60Hz
- 🔦 Beam Angle: 25° & 45° & 60° & 90°
- 🔌 Base Options: US, Europe, UK standard plug
- ⚙️ CCT: 3000~3500K/4000~4500K/6000~6500K
- 💡 Light Source: XTE

Item No	Luminous Flux	Replacement	CRI	PF	Light Source	Dimensions	Weight
LSFL-400W-R	40000Lm	750W Matel Halide	>80	>0.95	150pcs Cree XTE	400x430x192mm	15.5Kg
LSFL-400W-S	40000Lm	750W Matel Halide			150pcs Cree XTE	400x430x192mm	15.5Kg
LSFL-500W-R	50000Lm	1000W Matel Halide			220pcs Cree XTE	400x430x192mm	18.5Kg
LSFL-500W-S	50000Lm	1000W Matel Halide			220pcs Cree XTE	400x430x192mm	18.5Kg
LSFL-1000W-S	100000Lm	2000W Matel Halide			440pcs Cree XTE	534x430x600mm	27.5Kg



10W



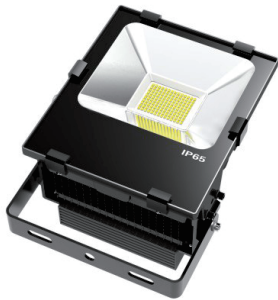
20W



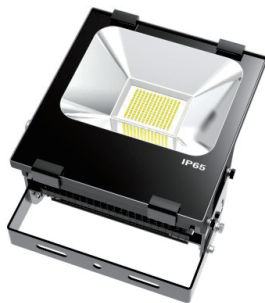
30W



50W



70W 80W



100W 120W



150W



200W



- ⚡ IP Rating: IP65
- 🔌 Base Options: US, Europe, UK standard plug
- ⚡ Input Voltage: 85~277VAC/12~24VDC, 50/60Hz
- ☀ CCT: 3000~3500K/4000~4500K/6000~6500K
- 🔦 Beam Angle: 120 degree
- 💡 Light Source: SMD 2835 or SMD 3030

Item No	Luminous Flux	Input Voltage	Replacement	CRI	PF	Power Supply	Dimensions	Weight
LSFL-10W-S	1000 Lm	100-300VAC 50/60Hz	35W Matel Halide	>80	>0.95	Isolated Power Supply	60x39x46cm	0.9Kg
LSFL-20W-S	2000Lm		50W Matel Halide				58x29x46cm	1.4Kg
LSFL-30W-S	3000Lm		105W Matel Halide				47x43x47cm	1.9Kg
LSFL-50W-S	5000Lm		150W Matel Halide				73x60x50cm	2.5Kg
LSFL-70W-S	7000Lm		175W Matel Halide				73x60x50cm	4.7Kg
LSFL-80W-S	8000Lm		225W Matel Halide				HLG-80H-36A	73x60x50cm
LSFL-100W-S	10000Lm		250W Matel Halide			HLG-100H-36A	41x35x28cm	11.5Kg
LSFL-120W-S	12000Lm		300W Matel Halide			HLG-120H-36A	41x35x28cm	11.5Kg
LSFL-150W-S	15000Lm		350W Matel Halide			HLG-150H-36A	41x35x28cm	11.5Kg
LSFL-200W-S	20000Lm		400W Matel Halide			HLG-185H-36A	53x44x29cm	13.5Kg

Retrofit LED Street Lamp (A Type)

ALUMINUM FIN LED HIGH BAY LIGHT 80W-300W



20W



30W



50W



100W



150W



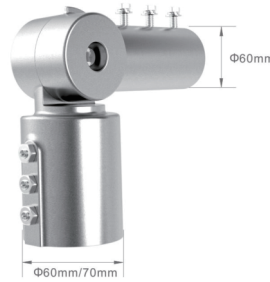
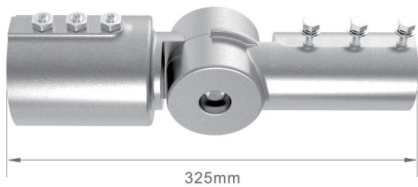
200W



240W



300W



- 🔦 IP Rating IP65
 🔌 Base Options US, Europe, UK standard plug
- ⚡ Input Voltage: 100-300VAC, 50/60Hz
 ⚙️ CCT: 2700-3500K 4000-4500K 5000-5500K 6000-6700K
- 🔦 Beam Angle: 150x80°
 💡 Light Source: SMD 3030

Item No	Luminous Flux	Input Voltage	Replacement	CRI	PF	THD	Meanwell Driver	Dimensions
LSSL-20W-A	2200 Lumen	100-300VAC 50/60Hz	50W Matel Halide/HPS	>80	>0.95	<9%	HLG-40H-36A	366x135x84 mm
LSSL-30W-A	3300 Lumen		75W Matel Halide/HPS				HLG-60H-36A	366x135x89 mm
LSSL-50W-A	6300 Lumen		125W Matel Halide/HPS				HLG-60H-36A	292x292x128 mm
LSSL-100W-A	12500 Lumen		175W Matel Halide/HPS				HLG-100H-48A	384x304x128 mm
LSSL-150W-A	18700 Lumen		200W Matel Halide/HPS				HLG-150H-48A	476x304x128 mm
LSSL-200W-A	25000 Lumen		300W Matel Halide/HPS				HLG-240H-48A	568x304x128 mm
LSSL-240W-A	31300 Lumen		400W Matel Halide/HPS				HLG-240H-48A	660x304x128 mm
LSSL-300W-A	40000 Lumen		500W Matel Halide/HPS				HLG-320H-48A	752x304x128 mm

ORDER NOW TEL 86 - 1 3612 9454 45 OR Email sales@lampshining.com
www.lampshining.com / www.ledlampshining.com

Retrofit LED Street Lamp (B Type)



50W



90W 100W



150W



200W



240W



IP Rating	Ip65	Base Options	US, Europe, UK standard plug
Input Voltage:	85~295VAC, 50/60Hz	CCT:	2700-3500K 4000-4500K 5000-5500K 6000-6700K
Beam Angle:	150x80°	Light Source:	SMD 3030

Item No	Luminous Flux	Input Voltage	Replacement	CRI	PF	THD	Light Source	Dimensions
LSSL-50W-B	6300 Lumen	100-300VAC 50/60Hz	150W Matel Halide / HPS	>80	>0.95	<9%	70pcs SMD 3030	371x192x88 mm
LSSL-90W-B	11900 Lumen		250W Matel Halide / HPS				140pcs SMD 3030	495x292 x98 mm
LSSL-100W-B	12500 Lumen		275W Matel Halide / HPS				140pcs SMD 3030	495x292 x98 mm
LSSL-150W-B	18700 Lumen		300W Matel Halide / HPS				210pcs SMD 3030	587x292 x98 mm
LSSL-200W-B	25000 Lumen		400W Matel Halide / HPS				280pcs SMD 3030	679x292 x98 mm
LSSL-240W-B	31300 Lumen		750W Matel Halide / HPS				350pcs SMD 3030	679x292 x98 mm

Aluminum Fin LED High Bay Light 80W-300W

ALUMINUM FIN LED HIGH BAY LIGHT 80W-300W



80W



100W



120W



150W



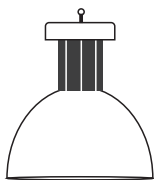
200W



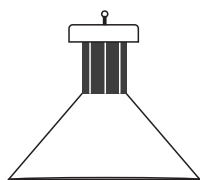
240W



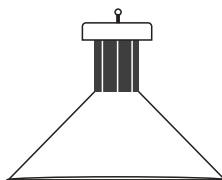
300W



45°



90°



120°



Glass cover at the bottom



PMMA Acrylic 45 degree



- 🔌 IP Rating IP64(Indoor only)
🔌 Base Options US, Europe, UK standard plug
- ⚡ Input Voltage: 100-300VAC, 50/60Hz
⚙️ CCT: 2700-3500K 4000-4500K
5000-5500K 6000-6700K
- 🔦 Beam Angle: 25 & 45 & 90 & 120 degree
💡 Light Source: SMD 3030

Item No	Luminous Flux	Input Voltage	Replacement	CRI	PF	Meanwell Driver	Dimensions	Weight
LSHBL-80WXY	8000 Lumen	100-300VAC 50/60Hz	150-175W Matel Halide	>80	>0.95	HLG-80H-48A	Φ260*H290mm	5.25Kg
LSHBL-100WXY	10000 Lumen		200-250W Matel Halide			HLG-100H-48A	Φ260*H290mm	5.25Kg
LSHBL-120WXY	12000 Lumen		250-300W Matel Halide			HLG-120H-48A	Φ260*H320mm	5.6Kg
LSHBL-150WXY	15000 Lumen		350-400W Matel Halide			HLG-150H-48A	Φ260*H320mm	5.6Kg
LSHBL-200WXY	20000 Lumen		500W Matel Halide			HLG-200H-48A	Φ260*H360mm	6.5Kg
LSHBL-240WXY	24000 Lumen		600W Matel Halide			HLG-240H-48A	Φ260*H420mm	6.5Kg
LSHBL-300WXY	30000 Lumen		750W Matel Halide			HLG-320H-48A	Φ260*H420mm	7.5Kg

T8 LED Tube 2835 SMD



T8
Non-Isolated
100-240VAC

- LUMINOUS EFFICIENCY >105Lm/w
- Driver Style Non-Isolated
- INPUT VOLTAGE 100-240VAC
- COLOR TEMP 2700K ~ 6500K

(Non-Isolate Driver Style 100-240VAC)



Watts	Item No.	Size (mm)	Light Source	Luminous Flux (Transparent)	Luminous Flux (Milky)	Package(CM)	NW(g)
9W	LST8-60-9W-84S2-N	Φ26*598	84 pcs 3528 SMD	1030Lm	840Lm	66*26*28	210g
15W	LST8-90-15W-132S2-N	Φ26*898	132 pcs 3528 SMD	1650Lm	1320Lm	95*26*28	290g
15W	LST8-120-15W-144S2-N	Φ26*1198	144 pcs 3528 SMD	1650Lm	1500Lm	130*26*28	395g
18W	LST8-120-18W-168S2-N	Φ26*1198	168 pcs 3528 SMD	1980Lm	1750Lm	130*26*28	395g
20W	LST8-120-20W-180S2-N	Φ26*1198	180 pcs 3528 SMD	2300Lm	1900Lm	130*26*28	395g
22W	LST8-150-22W-216S2-N	Φ26*1498	216 pcs 3528 SMD	2400Lm	2050Lm	160*26*28	520g
36W	LST8-240-36W-336S2-N	Φ26*1498	336 pcs 3528 SMD	3800Lm	3200Lm	260*26*20	520g



T8
Isolated
85-265VAC

- LUMINOUS EFFICIENCY >105Lm/w
- Driver Style Isolated
- INPUT VOLTAGE 85-265VAC
- COLOR TEMP 2700K ~ 6500K

(Isolate Driver Style 85-265VAC)



Watts	Item No.	Size (mm)	Light Source	Luminous Flux (Transparent)	Luminous Flux (Milky)	Package(CM)	NW(g)
9W	LST8-60-9W-84S2	Φ26*598	84 pcs 3528 SMD	1030Lm	840Lm	66*26*28	210g
15W	LST8-90-15W-132S2	Φ26*898	132 pcs 3528 SMD	1650Lm	1320Lm	95*26*28	290g
15W	LST8-120-15W-144S2	Φ26*1198	144 pcs 3528 SMD	1650Lm	1500Lm	130*26*28	395g
18W	LST8-120-18W-168S2	Φ26*1198	168 pcs 3528 SMD	1980Lm	1750Lm	130*26*28	395g
20W	LST8-120-20W-180S2	Φ26*1198	180 pcs 3528 SMD	2300Lm	1900Lm	130*26*28	395g
24W	LST8-120-24W-216S2	Φ26*1198	216 pcs 3528 SMD	2600Lm	2200Lm	130*26*28	395g
24W	LST8-150-24W-216S2	Φ26*1498	216 pcs 3528 SMD	2600Lm	2050Lm	160*26*28	520g
28W	LST8-180-28W-264S2	Φ26*1760	264 pcs 3528 SMD	3000Lm	2650Lm	190*26*28	520g
36W	LST8-240-36W-336S2	Φ26*2498	336 pcs 3528 SMD	3800Lm	3250Lm	260*26*20	520g